

21± ACRES ON SH-130 IN HUTTO

LAND FOR SALE



COMMERCIAL  
INDUSTRIAL  
PROPERTIES

Josh Hubka, CCIM  
josh@cipaustin.com

512 682 1000

9130 Jollyville Rd., Suite 300  
Austin, TX 78759  
cipaustin.com

# SUMMARY

## 21± Acres Commercial Land

Limmer Loop | Hutto, Texas

<b>Location:</b>	NWC and SWC of SH-130 @ Limmer Loop Hutto, Texas 78634 <a href="#">Google Map Link</a>								
<b>Size:</b>	20.842± acres in two lots: <table><tr><td>NWC</td><td>18.801± acres</td><td>WCAD # R020248</td></tr><tr><td>SWC</td><td>2.041± acres</td><td>WCAD # R483551</td></tr></table>			NWC	18.801± acres	WCAD # R020248	SWC	2.041± acres	WCAD # R483551
NWC	18.801± acres	WCAD # R020248							
SWC	2.041± acres	WCAD # R483551							
<b>Area Activity:</b>	<p>The site is located in the booming submarket of Hutto, on SH-130, a 91-mile toll road that connects San Antonio to Georgetown. Hutto retailers include Home Depot and Lowes, and the new Hutto Co-Op is just 2 ¾ miles from the site.</p> <p>The Property is within 20 minutes of two major employment projects that are under construction, the new Apple Campus on Parmer Land and the Tesla Gigafactory on SH-130, each with 5,000 employees. It is just 4 miles from the HEB Plus at SH-130 and Gattis School, and the new Kahalari Resort is just 5 miles away.</p> <p>In April 2019, William Lyon Homes purchased 315 acres north of Limmer Loop to build 1,300 new homes. That is just the latest of a large influx of single-family developments for the Hutto area.</p>								
<b>Zoning:</b>	Hutto ETJ								
<b>Utilities:</b>	Water	Jonah Water – see enclosed map							
	Wastewater	Septic. Hutto CCN, no existing lines							
<b>Floodplain:</b>	Approximately 3.69± acres are within the FEMA floodplain. See enclosed floodplain map.								
<b>Asking Price:</b>	\$5.00/sf								

### For More Information Contact:

**Josh Hubka, CCIM**

Principal

josh@cipaustin.com | 512 682 1002

main 512 682 1000 | fax 512 682 1031

**cipaustin.com**



**COMMERCIAL  
INDUSTRIAL  
PROPERTIES**

All information furnished regarding this property is from sources deemed reliable; however, CIP Austin has not made an independent investigation of these sources and no warranty or representation is made by CIP Austin as to the accuracy thereof and same is submitted subject to errors, omissions, change of price, rental or other conditions, prior sale, lease or withdrawal from market without notice. CIP Austin further has not made and shall not make any warranty or representations as to the condition of the property nor the presence of any hazardous substances or any environmental or other conditions that may affect the value or suitability of the property.

**512 682 1000**

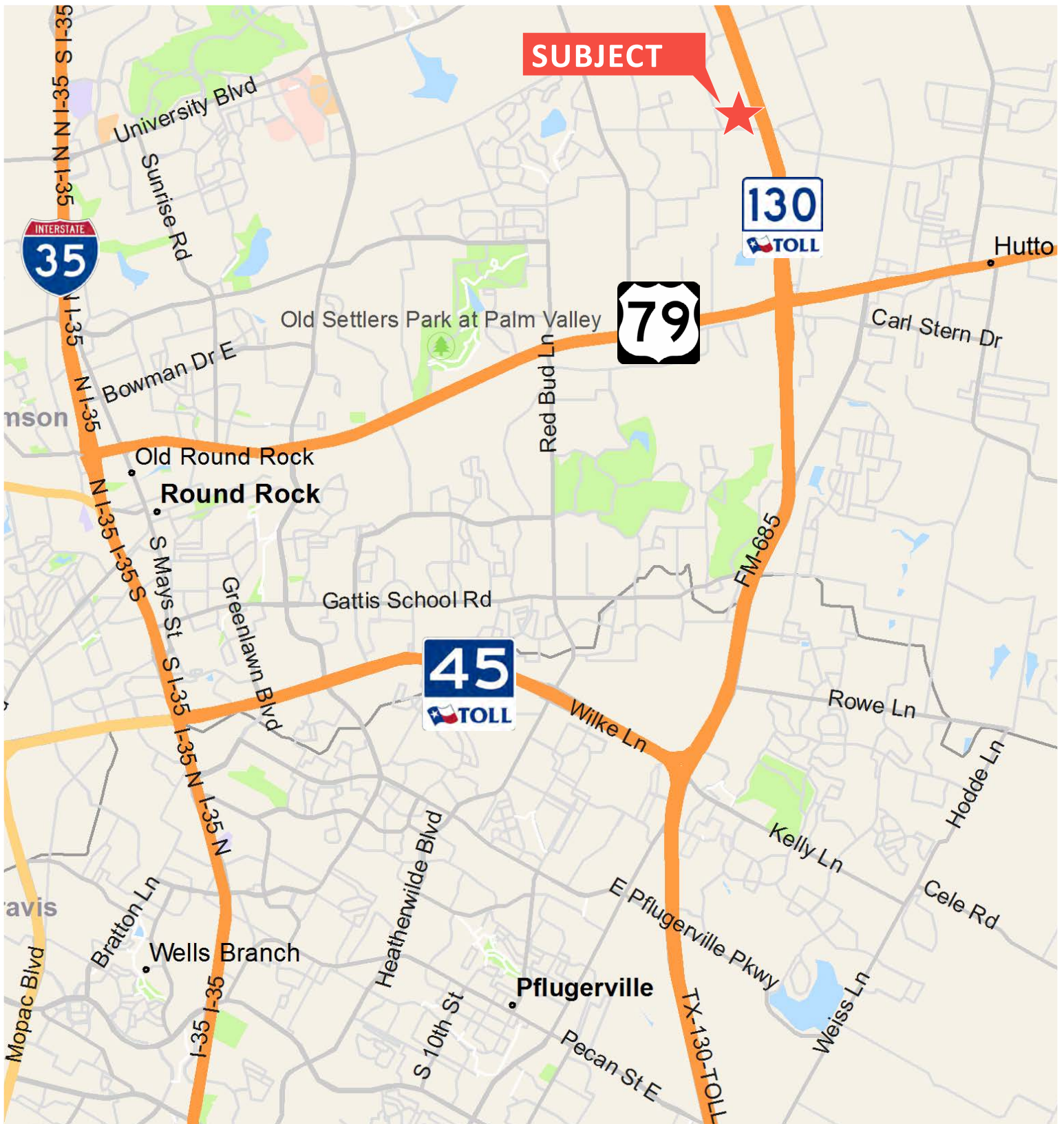
9130 Jollyville Rd., Suite 300

Austin, TX 78759

cipaustin.com

# REGIONAL MAP

21± Acres Commercial Land  
Limmer Loop | Hutto, Texas



**COMMERCIAL  
INDUSTRIAL  
PROPERTIES**

All information (Information) provided or depicted on this map and/or aerial photograph has been obtained from third party sources deemed reliable. However, neither CIP Austin nor any of its brokers, agents, employees, officers, directors or affiliated companies (collectively, CIP Austin and Related Parties) have made an independent investigation of the Information or the Information sources, and no warranty or representation is made by CIP Austin and Related Parties as to the accuracy of such Information. The Information is submitted subject to the possible errors or omissions, and no person or organization should rely on the Information, unless such person or organization has conducted an independent investigation to confirm the accuracy thereof.

**512 682 1000**

9130 Jollyville Rd., Suite 300

Austin, TX 78759

[cipaustin.com](http://cipaustin.com)

# AREA MAP

## 21± Acres Commercial Land Limmer Loop | Hutto, Texas



**COMMERCIAL  
INDUSTRIAL  
PROPERTIES**

All information (Information) provided or depicted on this map and or aerial photograph has been obtained from third party sources deemed reliable. However, neither CIP Austin nor any of its brokers, agents, employees, officers, directors or affiliated companies (collectively, CIP Austin and Related Parties) have made an independent investigation of the Information or the Information sources, and no warranty or representation is made by CIP Austin and Related Parties as to the accuracy of such information. The Information is submitted subject to the possible errors or omissions, and no person or organization should rely on the Information, unless such person or organization has conducted an independent investigation to confirm the accuracy thereof.

**512 682 1000**

9130 Jollyville Rd., Suite 300

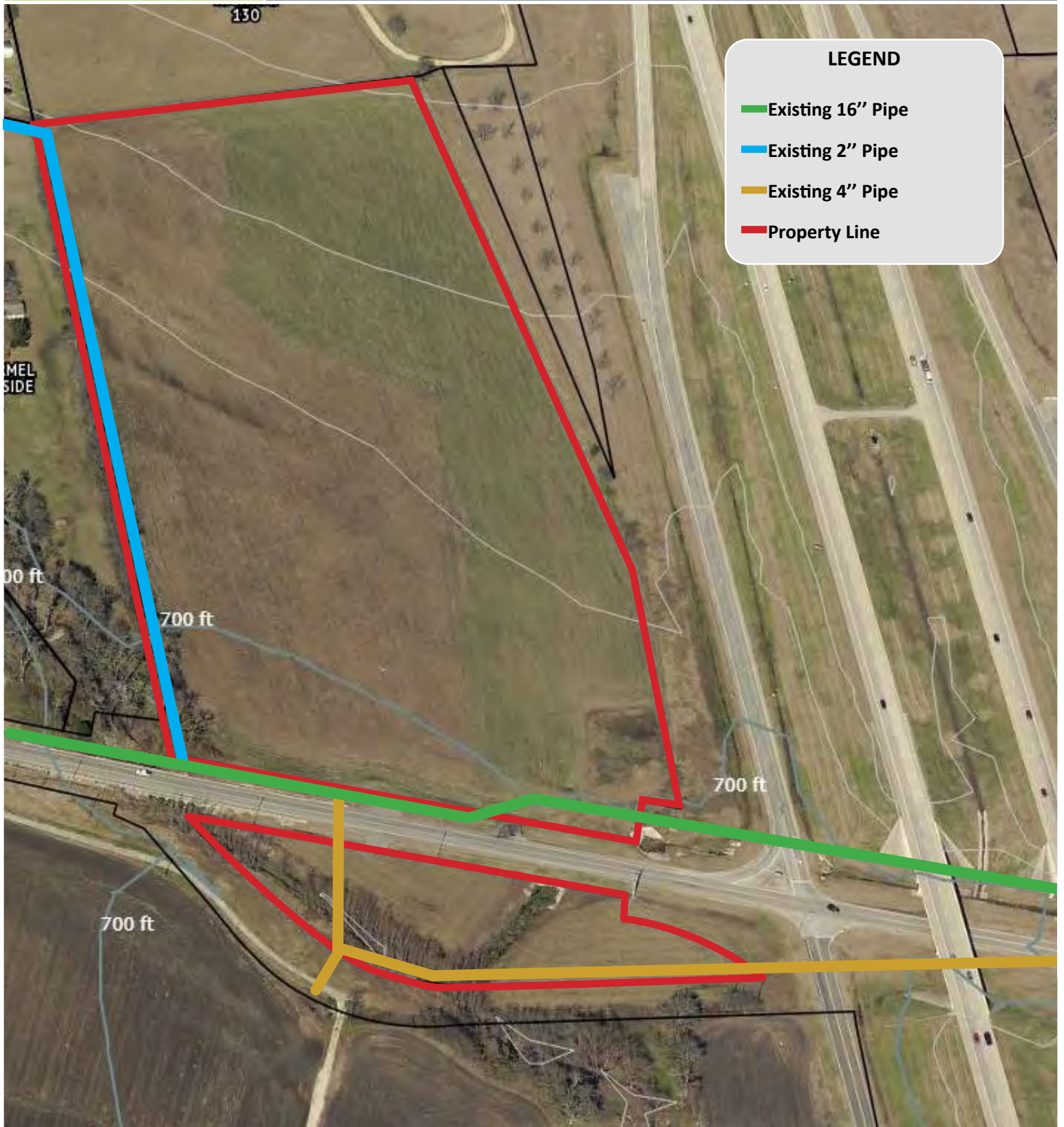
Austin, TX 78759

[cipaustin.com](http://cipaustin.com)

# TOPO & WATER MAP

## 21± Acres Commercial Land

Limmer Loop | Hutto, Texas



**COMMERCIAL  
INDUSTRIAL  
PROPERTIES**

All information (Information) provided or depicted on this map and or aerial photograph has been obtained from third party sources deemed reliable. However, neither CIP Austin nor any of its brokers, agents, employees, officers, directors or affiliated companies (collectively, CIP Austin and Related Parties) have made an independent investigation of the Information or the Information sources, and no warranty or representation is made by CIP Austin and Related Parties as to the accuracy of such Information. The Information is submitted subject to the possible errors or omissions, and no person or organization should rely on the Information, unless such person or organization has conducted an independent investigation to confirm the accuracy thereof.

**512 682 1000**

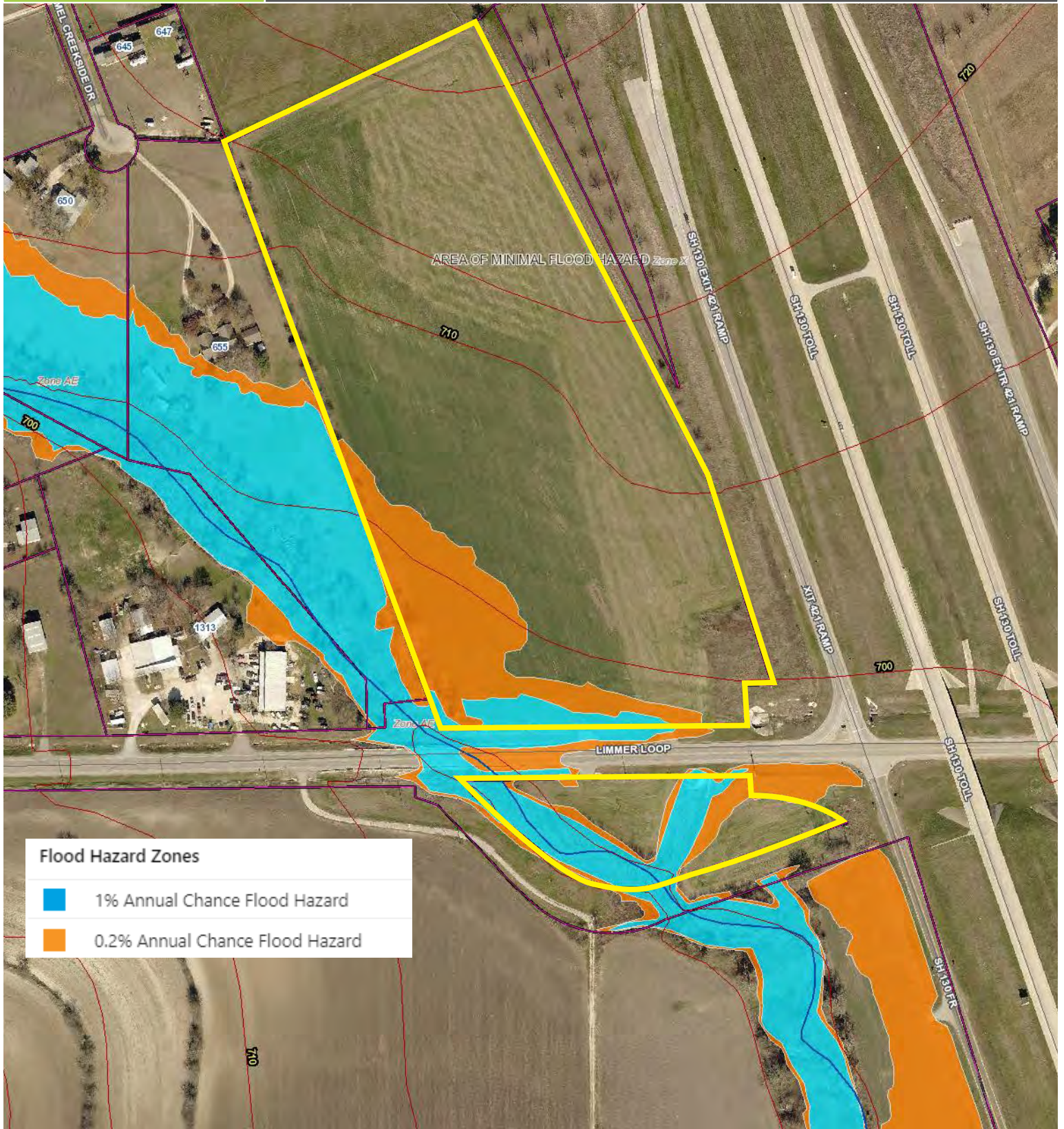
9130 Jollyville Rd., Suite 300

Austin, TX 78759

[cipaustin.com](http://cipaustin.com)

# FLOODPLAIN MAP

21± Acres Commercial Land  
Limmer Loop | Hutto, Texas



COMMERCIAL  
INDUSTRIAL  
PROPERTIES

All information (Information) provided or depicted on this map and/or aerial photograph has been obtained from third party sources deemed reliable. However, neither CIP Austin nor any of its brokers, agents, employees, officers, directors or affiliated companies (collectively, CIP Austin and Related Parties) have made an independent investigation of the Information or the Information sources, and no warranty or representation is made by CIP Austin and Related Parties as to the accuracy of such Information. The Information is submitted subject to the possible errors or omissions, and no person or organization should rely on the Information, unless such person or organization has conducted an independent investigation to confirm the accuracy thereof.

512 682 1000

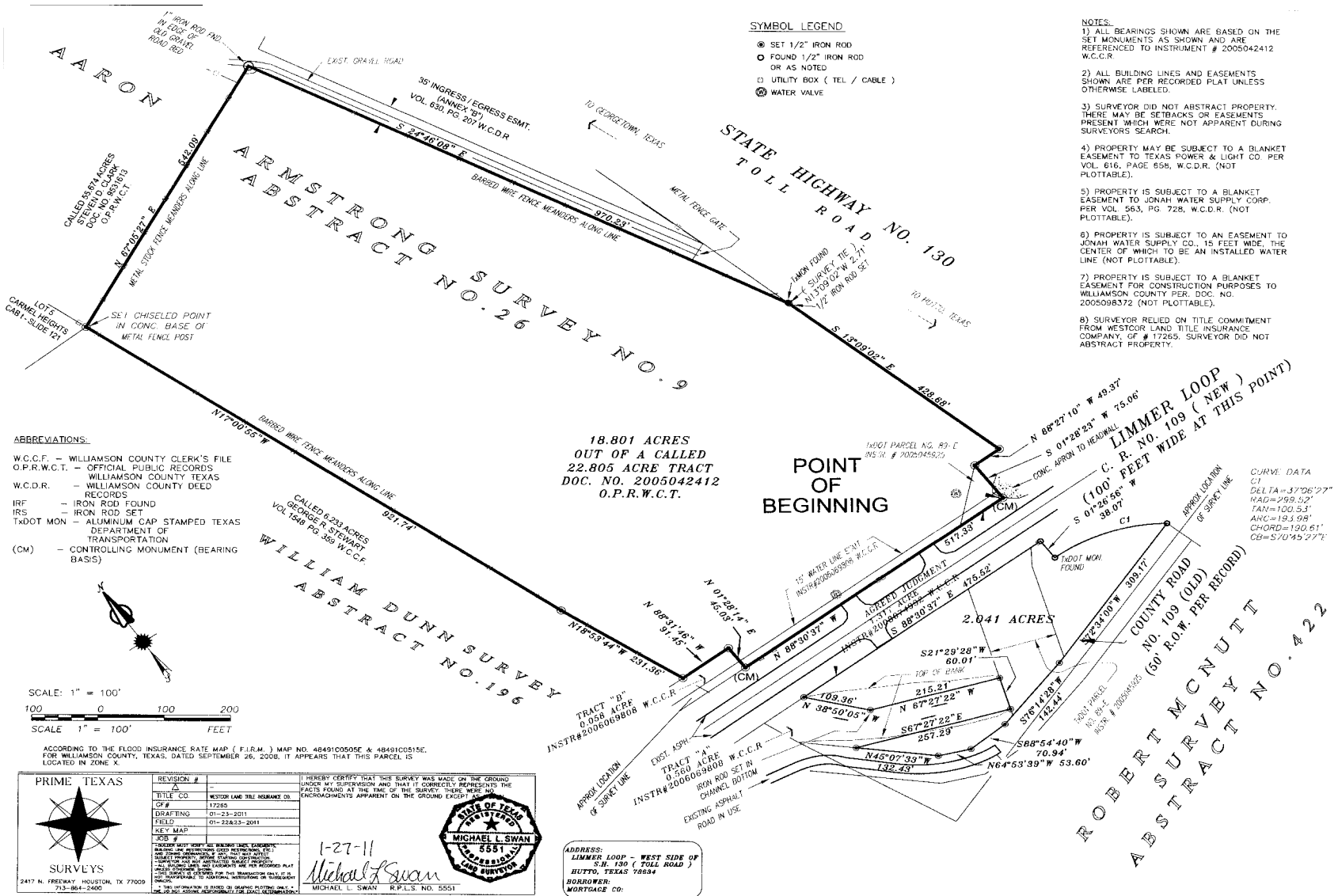
9130 Jollyville Rd., Suite 300

Austin, TX 78759

[cipaustin.com](http://cipaustin.com)

# SURVEY

## 21± Acres Commercial Land Limmer Loop | Hutto, Texas



**COMMERCIAL  
INDUSTRIAL  
PROPERTIES**

**512 682 1000**

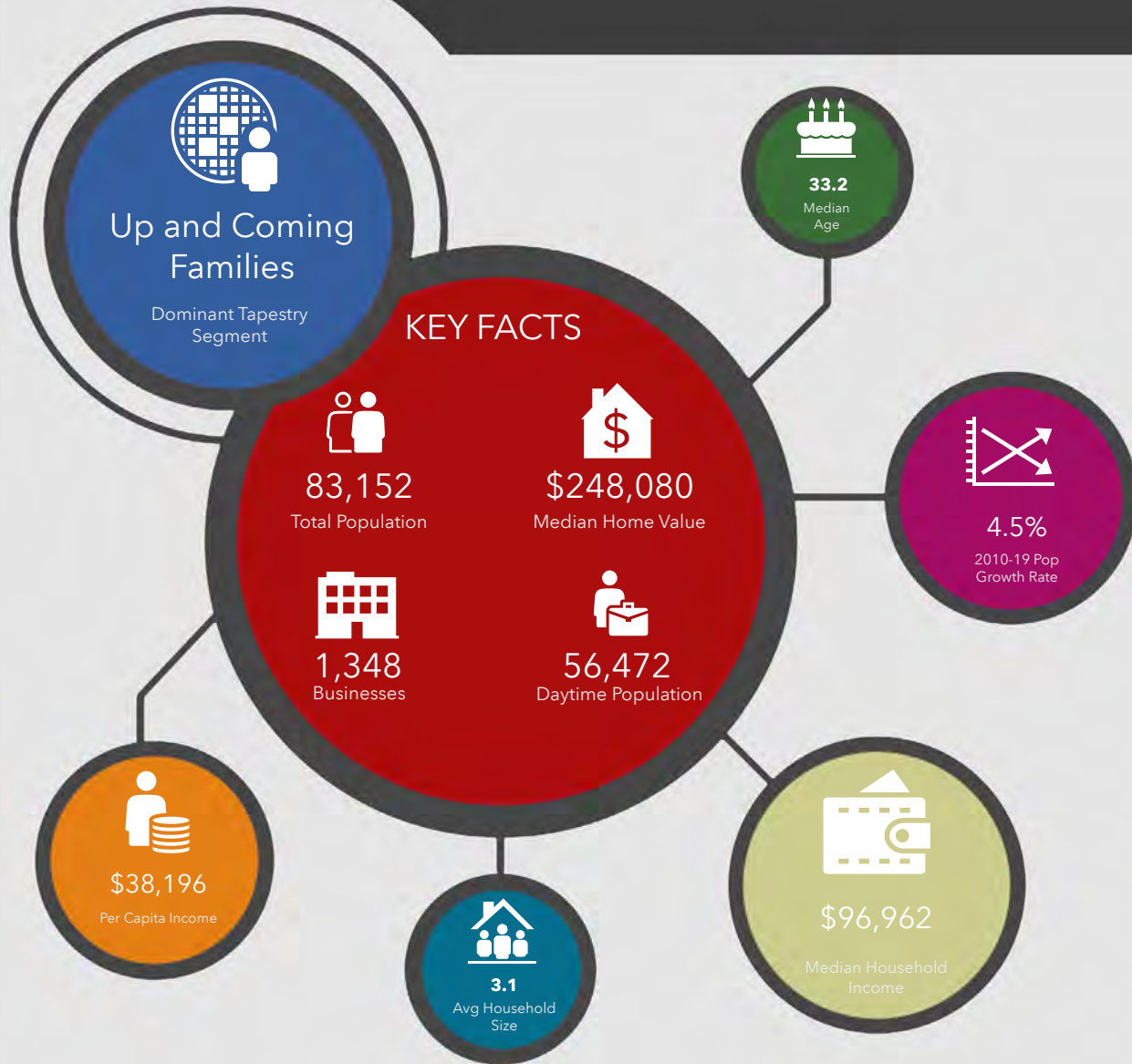
9130 Jollyville Rd., Suite 300

Austin, TX 78759

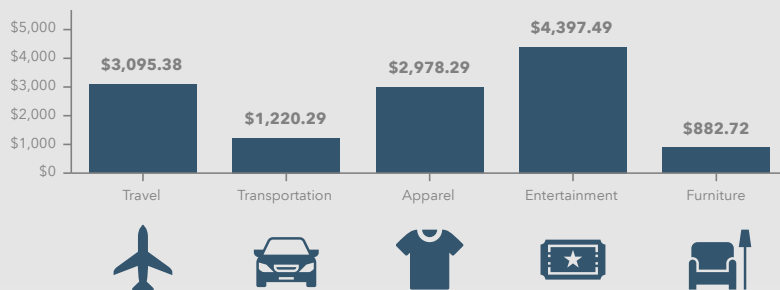
cipaustin.com

# DEMOGRAPHICS WITHIN 5 MILES

21± Acres Commercial Land  
Limmer Loop | Hutto, Texas



## KEY SPENDING FACTS



© Esri 2019  
Spending facts are average annual dollars per household



All information furnished regarding this property is from sources deemed reliable; however, CIP Austin has not made an independent investigation of these sources and no warranty or representation is made by CIP Austin as to the accuracy thereof and same is submitted subject to errors, omissions, change of price, rental or other conditions, prior sale, lease or withdrawal from market without notice. CIP Austin further has not made and shall not make any warranty or representations as to the condition of the property nor the presence of any hazardous substances or any environmental or other conditions that may affect the value or suitability of the property.

**512 682 1000**  
9130 Jollyville Rd., Suite 300  
Austin, TX 78759  
cipaustin.com





# Information About Brokerage Services

Texas law requires all real estate license holders to give the following information about brokerage services to prospective buyers, tenants, sellers and landlords.

11-2-2015



## TYPES OF REAL ESTATE LICENSE HOLDERS:

- **A BROKER** is responsible for all brokerage activities, including acts performed by sales agents sponsored by the broker.
- **A SALES AGENT** must be sponsored by a broker and works with clients on behalf of the broker.

## A BROKER'S MINIMUM DUTIES REQUIRED BY LAW (A client is the person or party that the broker represents):

- Put the interests of the client above all others, including the broker's own interests;
- Inform the client of any material information about the property or transaction received by the broker;
- Answer the client's questions and present any offer to or counter-offer from the client; and
- Treat all parties to a real estate transaction honestly and fairly.

## A LICENSE HOLDER CAN REPRESENT A PARTY IN A REAL ESTATE TRANSACTION:

**AS AGENT FOR OWNER (SELLER/LANDLORD):** The broker becomes the property owner's agent through an agreement with the owner, usually in a written listing to sell or property management agreement. An owner's agent must perform the broker's minimum duties above and must inform the owner of any material information about the property or transaction known by the agent, including information disclosed to the agent or subagent by the buyer or buyer's agent.

**AS AGENT FOR BUYER/TENANT:** The broker becomes the buyer/tenant's agent by agreeing to represent the buyer, usually through a written representation agreement. A buyer's agent must perform the broker's minimum duties above and must inform the buyer of any material information about the property or transaction known by the agent, including information disclosed to the agent by the seller or seller's agent.

**AS AGENT FOR BOTH - INTERMEDIARY:** To act as an intermediary between the parties the broker must first obtain the written agreement of *each party* to the transaction. The written agreement must state who will pay the broker and, in conspicuous bold or underlined print, set forth the broker's obligations as an intermediary. A broker who acts as an intermediary:

- Must treat all parties to the transaction impartially and fairly;
- May, with the parties' written consent, appoint a different license holder associated with the broker to each party (owner and buyer) to communicate with, provide opinions and advice to, and carry out the instructions of each party to the transaction.
- Must not, unless specifically authorized in writing to do so by the party, disclose:
  - that the owner will accept a price less than the written asking price;
  - that the buyer/tenant will pay a price greater than the price submitted in a written offer; and
  - any confidential information or any other information that a party specifically instructs the broker in writing not to disclose, unless required to do so by law.

**AS SUBAGENT:** A license holder acts as a subagent when aiding a buyer in a transaction without an agreement to represent the buyer. A subagent can assist the buyer but does not represent the buyer and must place the interests of the owner first.

## TO AVOID DISPUTES, ALL AGREEMENTS BETWEEN YOU AND A BROKER SHOULD BE IN WRITING AND CLEARLY ESTABLISH:

- The broker's duties and responsibilities to you, and your obligations under the representation agreement.
- Who will pay the broker for services provided to you, when payment will be made and how the payment will be calculated.

**LICENSE HOLDER CONTACT INFORMATION:** This notice is being provided for information purposes. It does not create an obligation for you to use the broker's services. Please acknowledge receipt of this notice below and retain a copy for your records.

Commercial Industrial Properties, LLC	9007597	info@cipaustin.com	(512) 682-1000
Licensed Broker /Broker Firm Name or Primary Assumed Business Name	License No.	Email	Phone
Robert Springer	627720	bob@cipaustin.com	(512) 682-1001
Designated Broker of Firm	License No.	Email	Phone
Licensed Supervisor of Sales Agent/ Associate	License No.	Email	Phone
Joshua Allen Hubka	570840	josh@cipaustin.com	512) 682-1002
Sales Agent/Associate's Name	License No.	Email	Phone

\_\_\_\_\_  
Buyer/Tenant/Seller/Landlord Initials

\_\_\_\_\_  
Date